

PRIME WiFi

Installation Guide

for  Windows^{XP}



Wireless
Freedom



Wireless router by:

Allied Telesis AT-iMG634w

Copyright 2006 © PrimeTel Ltd.

All rights reserved. No part of this publication may be reproduced or otherwise used without the prior written permission from PrimeTel Ltd.

PrimeTel Ltd. reserves the right to make changes in specifications and other information contained in this document without prior notice. All rights reserved. All trademarks or registered trademarks are the property of their respective holders.

2006 Edition – v.1.10 – The republication of this Guide prevails and invalidates all previous ones published by PrimeTel.

ATTENTION

All the information in this manual is property of PrimeTel. Please do not copy or reproduce all or part of this manual without the prior written permission of PrimeTel Ltd.



Table of contents

Chapter 1:	Introduction.....	1
	PrimeWiFi Wireless Home Network.....	2
	What's in the box.....	2
Chapter 2:	Connecting your PrimeWiFi Wireless router	3
Chapter 3:	Configuring your Computer	6
	Wireless Network Adapter.....	6
	Setting Up your Computer.....	7
APPENDIX A:	Troubleshooting.....	13
APPENDIX B:	Description of Ports and LED lights.....	14
	Rear Panel.....	14
	Rear Panel Ports And Button Description.....	14
	Front Panel.....	15
	LED Lights Description.....	16
APPENDIX C:	Unit Wall Installation.....	17
APPENDIX D:	Technical Specifications.....	18
APPENDIX E:	Important Safety Precautions.....	19
APPENDIX F:	Contact Information.....	20

Chapter 1: Introduction

Thank you for choosing PrimeWiFi, a service upgrade by PrimeTel. The PrimeWiFi service is a convenient Wireless Internet connectivity solution for your home. After installing your PrimeWiFi Wireless router you will have your own home network, a very useful tool for sharing computer resources. A network enables you to access one printer from different computers and access data located on another computer on your network. As for entertainment, with a network you can play multiplayer video games, so networks are not only useful but they can also be fun.

A laptop computer or a PC equipped with a wireless card and adapter can communicate with your PrimeWiFi Wireless router and share the same Internet connection without cluttered cables or the need for more than one Internet subscriptions.



Most laptop computers these days have built-in wireless technology, which makes them ready to connect to your network without you having to purchase any additional equipment.

Apart from computers, there are many other electronic devices that are WiFi enabled. Most common are PDAs (Personal Digital Assistants) but the list goes on to also include mobile phones, printers, scanners etc.



PrimeWiFi Wireless Home Network

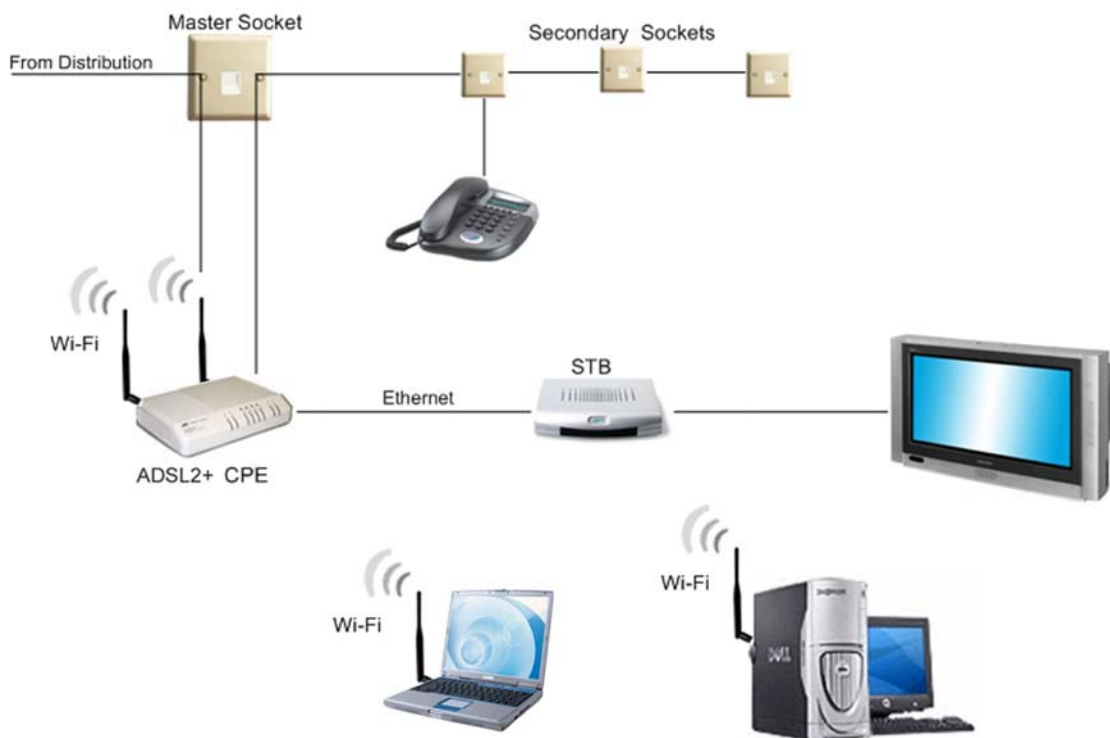


Figure 3-1: Wireless Home Network

What's In The Box

The package of the PrimeWiFi Wireless router includes the following:

1



PrimeWiFi Wireless router

12V Power Adapter



2

3



Wall Mount Bracket

Chapter 2: Connecting the PrimeWiFi Wireless router

Step 1: Prepare the PrimeWiFi Wireless router by attaching the two antennas to the back of the unit.



Figure 2-1: Antennas

Step 2: Connect the cables as follows:

- Power** – Power Adapter
- ADSL** – } Cable that comes from the wall jack (splits in two plugs)
- TEL 1** – }
- TEL 2** – Second Telephone Line
(Additional subscription required)
- LAN 1** – Wired Ethernet Device
- LAN 2** – Additional Wired Ethernet Device
- LAN 3** – PrimeTV Set-Top Box
- LAN 4** – Additional PrimeTV Set-Top Box
(Service not currently available)
- PSTN** – Not used in the basic home-use configuration

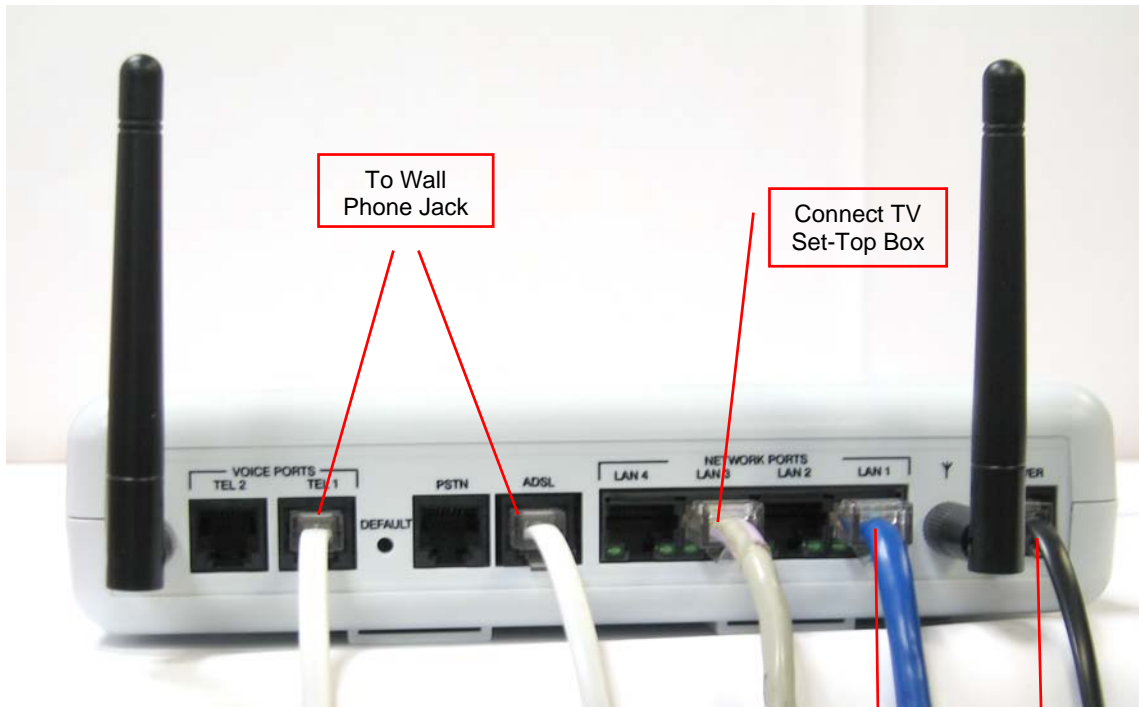


Figure 2-2: Rear Panel Ports

Step 3: Switch the power on by plugging-in the Power Adaptor to the wall socket. When you power the Wireless router for the first time it might take several minutes for the device to initialise and download the system configuration files. Typical time required 10 – 30 minutes, but in some cases it might take longer than 30 minutes for all the configuration files to download.

IMPORTANT: DO NOT cover the Wireless router with tablecloth or place any other devices over it. Covering the router prevents proper ventilation and might result in overheating or fire.



It is NOT recommended to disconnect the device from power during the initialization process. While the router is initialising the status of the LED lights will be as follows:

- Power** – green light will go on
- System**– red light will go on temporarily after power on
- ADSL** – green light will start flashing quickly

Step 4: After the PrimeWiFi Wireless Router finishes loading and goes into idle mode, the status of the LEDs will be as follows:

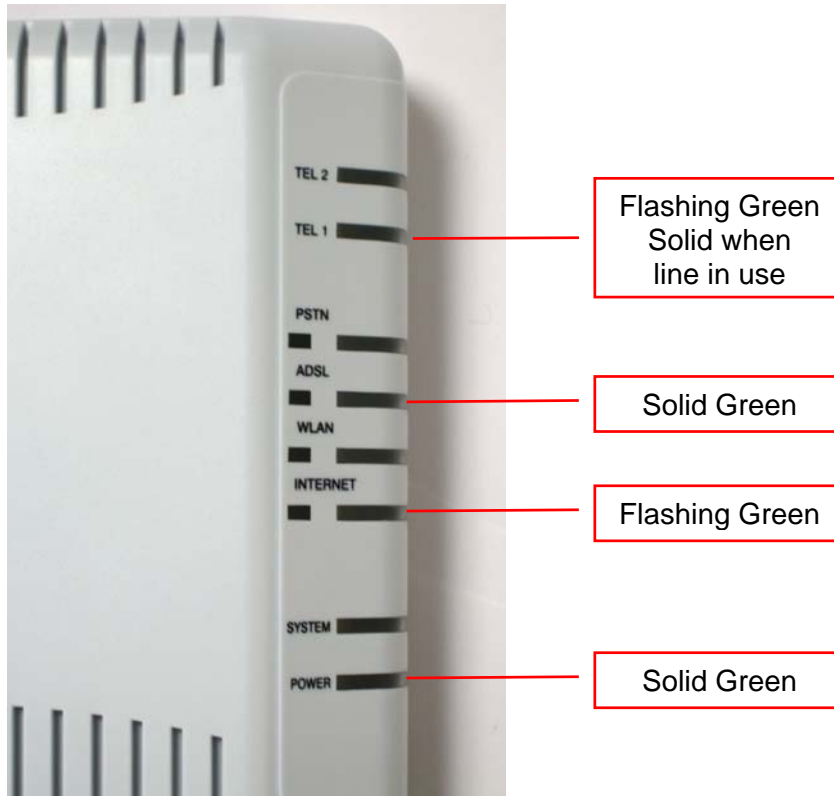


Figure 2-3: Front Panel LED lights on idle mode

If the router fails to initialise and the LED lights are not as indicated above or an LED is solid or flashing red then go back to Step 2 and check that the wires are connected correctly. If wires are connected as indicated then unplug the PrimeWiFi Wireless router, wait for 30 seconds, plug it back in and repeat the installation from Step 3.

IMPORTANT: If the SYSTEM light continues to flash for longer than 30 minutes during the first initialization, try restarting the router by disconnecting it from the power outlet.

If the system light is solid red the router needs to be replaced.

Please call PrimeTel's technical support at 133 for further instructions on how to replace the router.



Chapter 3: Configuring your computer

With the PrimeWiFi Wireless router you can connect your WiFi enabled laptop computer to the Internet as well as desktop computers. Most laptop computers now come with built-in WiFi capabilities so there is no need to buy any additional equipment.



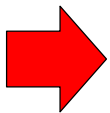
If your laptop is not equipped with a wireless adapter you will require an external laptop wireless adapter (wireless card).

Figure 3-1: Laptop Wireless Adapter

Desktop computers can also connect to your PrimeWiFi Wireless router with the use of a wireless desktop adapter.



Figure 3-2: Wireless Desktop Adapter



NOTICE: Some Wireless adapters include their own installation and configuration software application. It is recommended to use this application to configure and use the router instead of following the instructions as described below in *Setting up Your Computer*.



Wireless Network Adapter

To check if your computer has a wireless network adapter, do the following:

1. Click on Start, choose Settings, click on Control Panel
2. From the Control Panel Window double-click on Network Connections

The adapters installed in your computer are listed in this window.

If your computer is not equipped with a built-in wireless network adapter or one similar to those above then you would have to purchase one from a computer or electronics shop.

Setting Up your Computer

Step 1: Make sure the wireless card is installed and is enabled

Go to:

Start menu > Settings > Network Connections

Click on **Wireless Network Connection**.

(If you do not see the **Wireless Network Connection** on the Start Menu, you can also find it the Control Panel.

Start menu > Settings > Control Panel)

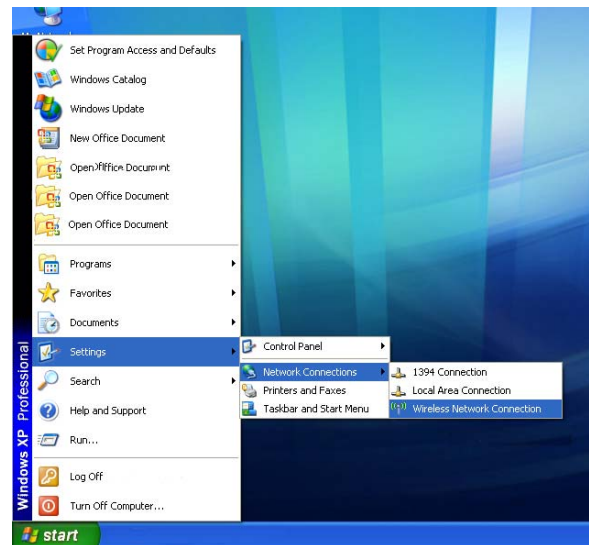
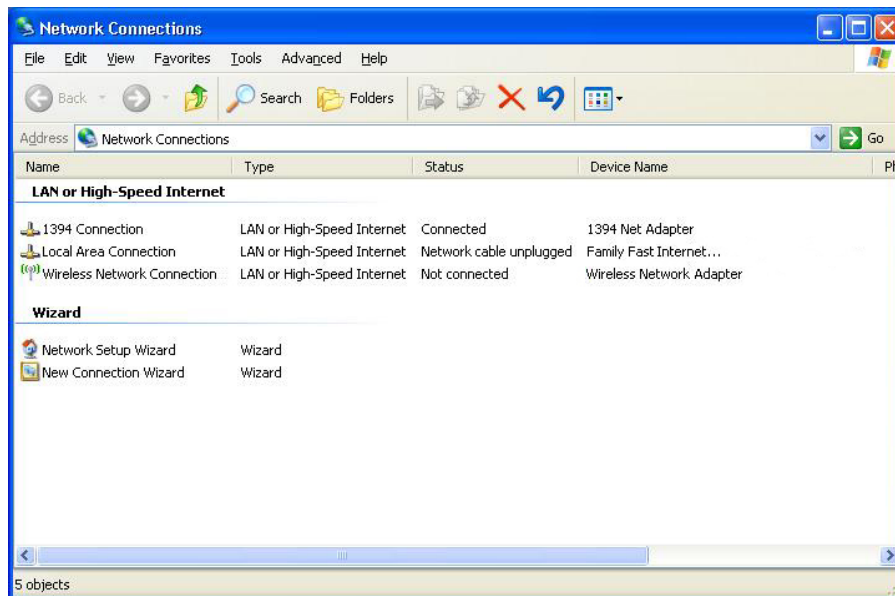


Figure 3-2: Network Connections

NOTICE: Some Wireless adapters have self-configuration features and will automatically set up when connected. In such a case you will not have to manually configure the connection and you will jump to the last stage of the setup where you are prompted for the Network Key.



Step 2: In the Network Connections, right-click on **Wireless Network Connection** and select properties.

Figure 3-3: Wireless Network Connections

Step 3: Select **Internet Protocol TCP/IP** from the list and click on properties.

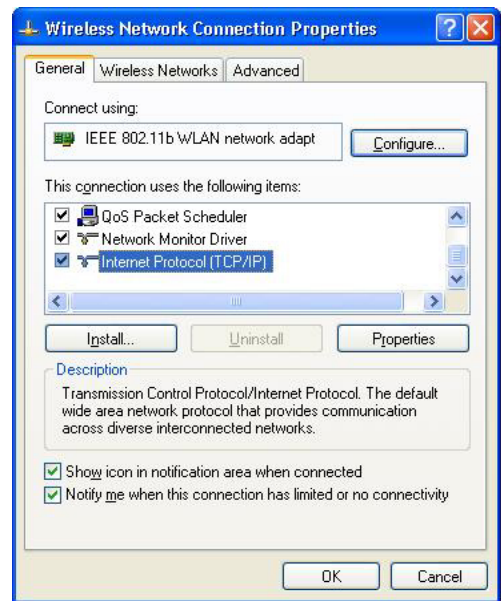
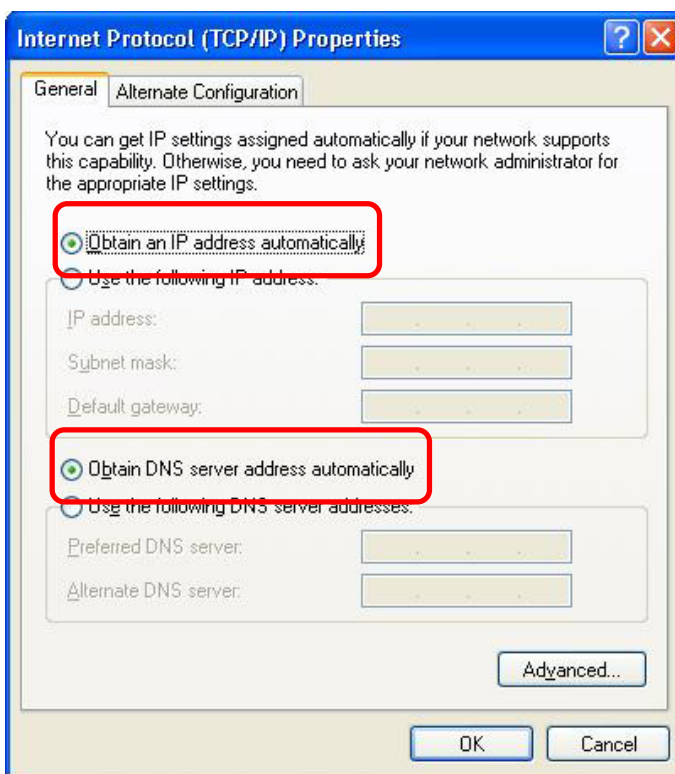
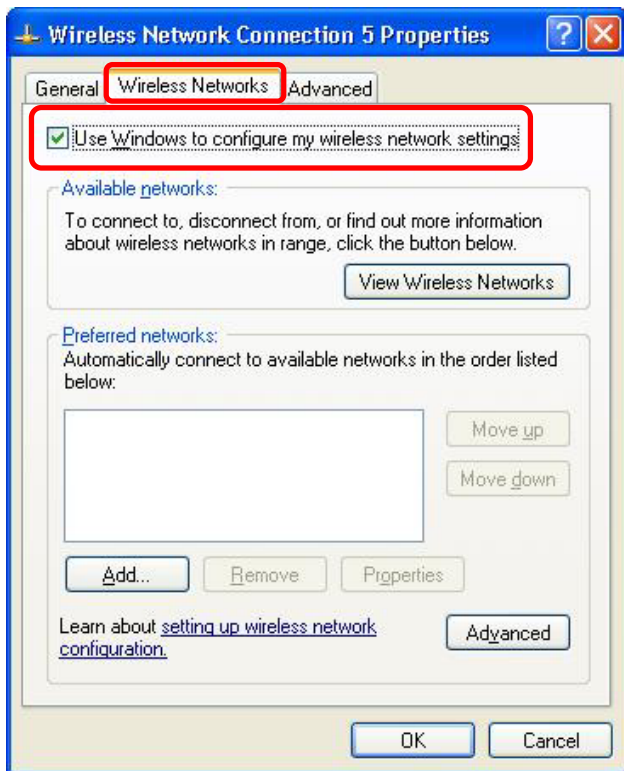


Figure 3-2: Wireless Network Connection Properties



Step 4: Select **Obtain an IP address automatically** and **Obtain DNS server address automatically**. Click OK

Figure 3-2: Internet Protocol TCP / IP Properties



Step 5: From the same window click on the **Wireless Networks** tab. Select "Use windows to configure my wireless network settings". Click Add.

Figure 3-4: Wireless Network Connection Properties

Step 6: Select the network you just added from the list in the **Preferred networks** and click on **Properties**. Under **Association** select network authentication to be **WPA** and Data encryption to be **TKIP**. Click OK.

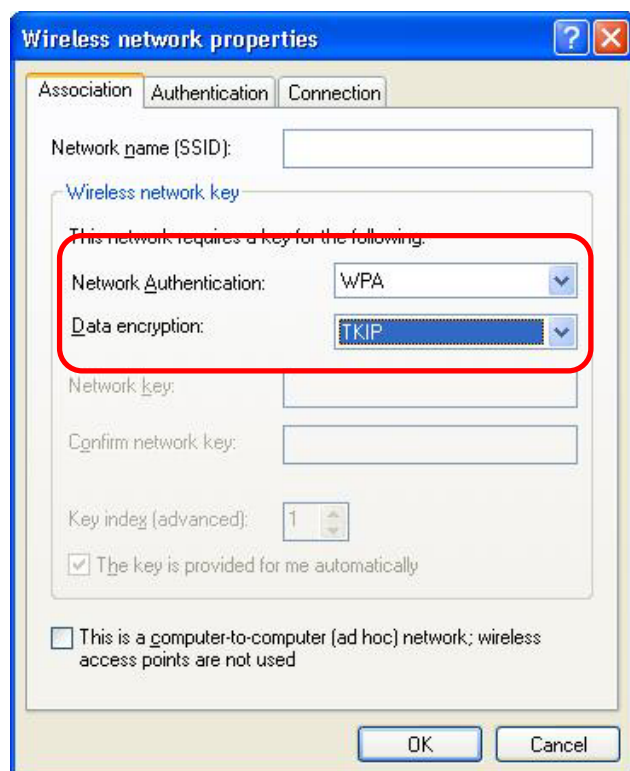
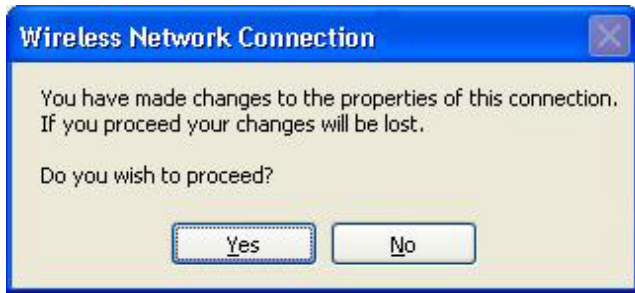


Figure 3-5: Internet Protocol Properties



Step 7: On the pop up window warning that you have made changes to the properties of the wireless connection click Yes

Figure 3-6: Confirmation

Step 8: Click on View Wireless Networks.

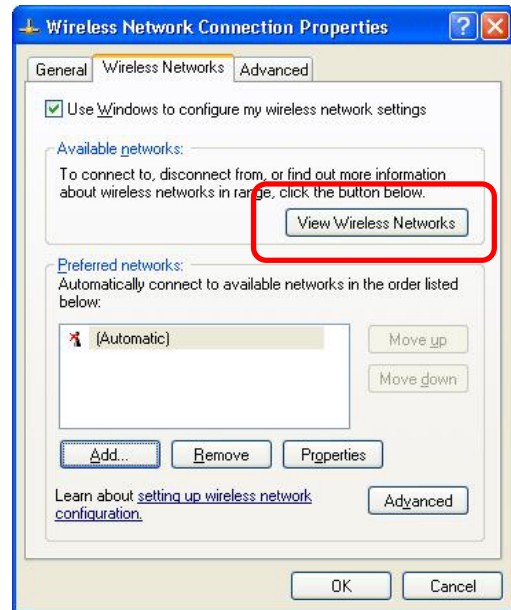
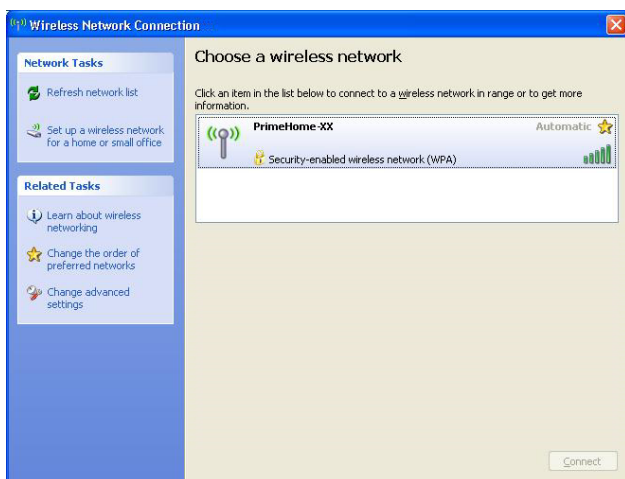


Figure 3-7: Preferred Wireless Networks



Step 9: From the the wireless networks available select **PrimeHome-XX** (where XX represents the last 2 digits of your home phone number).

Figure 3-8: Wireless Networks Available

Click the **Connect** button at the bottom of the window

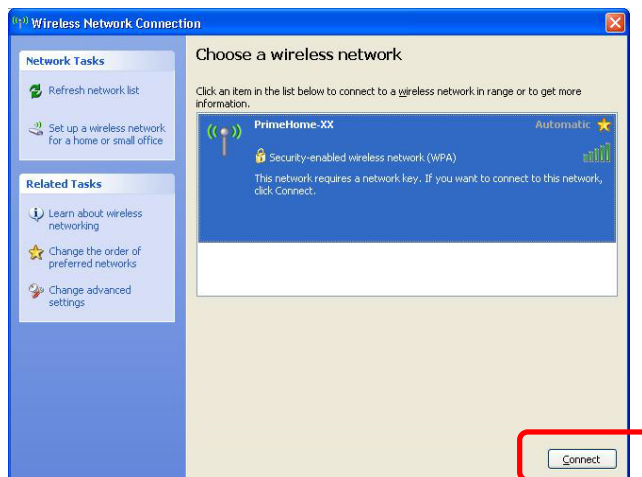


Figure 3-9: PrimeHome Network



Step 10: A window prompts you to enter the **Network Key**. You can find the network key on the letter that you received with your PrimeWiFi Wireless Router. The network key consists of 8 character (numbers and letters) and all letters should be entered in CAPITAL case.

Figure 3-10: Network Key

For security reasons the Network key is not displayed on the screen



Step 11: The popup window that opens indicates that your computer is connecting to the wireless network selected.

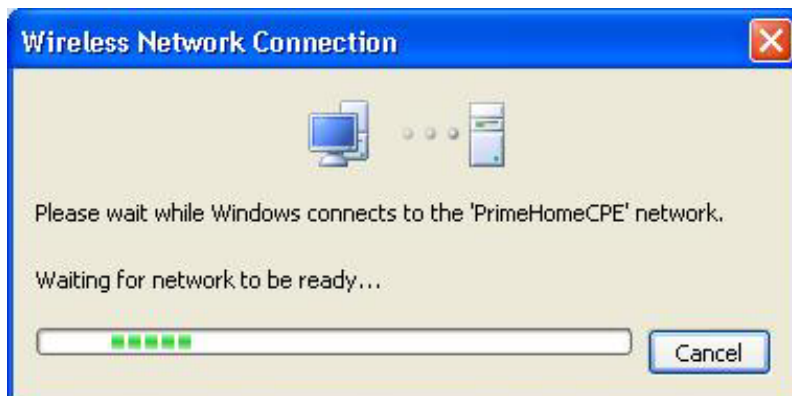
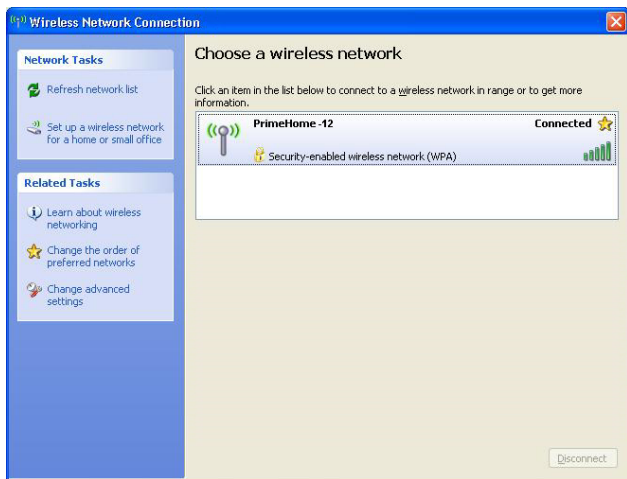


Figure 3-11: Connecting to the Network



Step 12: The list showing the available wireless networks appears, confirming that your computer is connected to the PrimeHome network. Your computer is now connected to the local network and to the Internet.

Figure 3-12: List of Networks

Step 13: When you close the window from Figure 3-12 an icon tip message appears over your taskbar to indicate that the wireless network settings are also accessible from a taskbar icon.

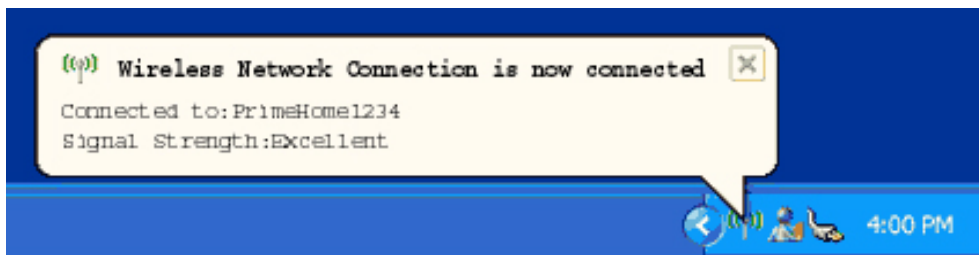


Figure 3-13: Confirmation of Connection

APPENDIX A: Troubleshooting

In this section you will find possible solutions to problems that may occur during the installation and operation of the PrimeWiFi Wireless router. Read the descriptions below to help you solve any problems that might occur. If you can't find the answer here and the problem continues to persist, please call PrimeTel Technical Support at 133 or visit one of our Customer Support Centres listed on the back cover.

PROBLEM	SOLUTION	REFERENCE
The Wireless router is not working	Verify that the Power cord and other network cables are plugged in	Chapter 2: Connecting the PrimeWiFi Wireless router
	Check the LED's on the router's front panel and verify that they are lit appropriately	Chapter 2 – section 4 and Figure 2-3: Front Panel lights
	Check the settings on your computer	Chapter 3: Configuring your Computer
I can't connect to the Wireless router	Verify that the router is properly installed; LAN connections are plugged-in and it is powered ON	Chapter 2: Connecting the PrimeWiFi Wireless router
	Check the settings on your computer	Chapter 3: Configuring your computer
	Make sure you are within the Wireless router's coverage area*	
The System light is solid red	The System LED lights briefly shortly after power ON and flashes while a software upgrade is in progress. If the system light is solid red the device needs to be replaced	Contact PrimeTel Technical Support for further assistance
The ADSL light is OFF or flashing	When the router synchronizes the ADSL light is solid green. If the light is OFF or flashing try powering the unit OFF, waiting for 30 seconds and then plug it back in	Chapter 2: Connecting the PrimeWiFi Wireless router

* Coverage area depends on obstructions between the Wireless router and the adapter. Other wireless devices might interfere and affect the range of coverage.

APPENDIX B: Description of Ports and LED lights

Rear Panel

PrimeWiFi's buttons and ports, where network cables are connected, are located on the rear panel.



Figure B-1: Rear Panel

Rear Panel Ports And Button Description

NAME	FUNCTION
Tel Port	Connects analogue telephone and fax through a telephone cord
Default Button	DO NOT USE. This device has been configured by PrimeTel and pressing the Default button will reset the device to the manufacturer's configuration, which will make it inoperable with your PrimeTel service
LAN Ports (MDI-X)	Connects computer, HUB and switch with CAT5e Ethernet cable
ADSL Port	Connects phone line from the wall socket
Power Cable	Provides the 12V DC power to this product. This product does not have a power switch, you have to plug or unplug the power cable to turn the unit on or off
PSTN Port	Connects to the public switching telephone network – Not used in the basic configuration

Front Panel

PrimeWiFi's LED lights, which display information about network activity, are located on the front panel.

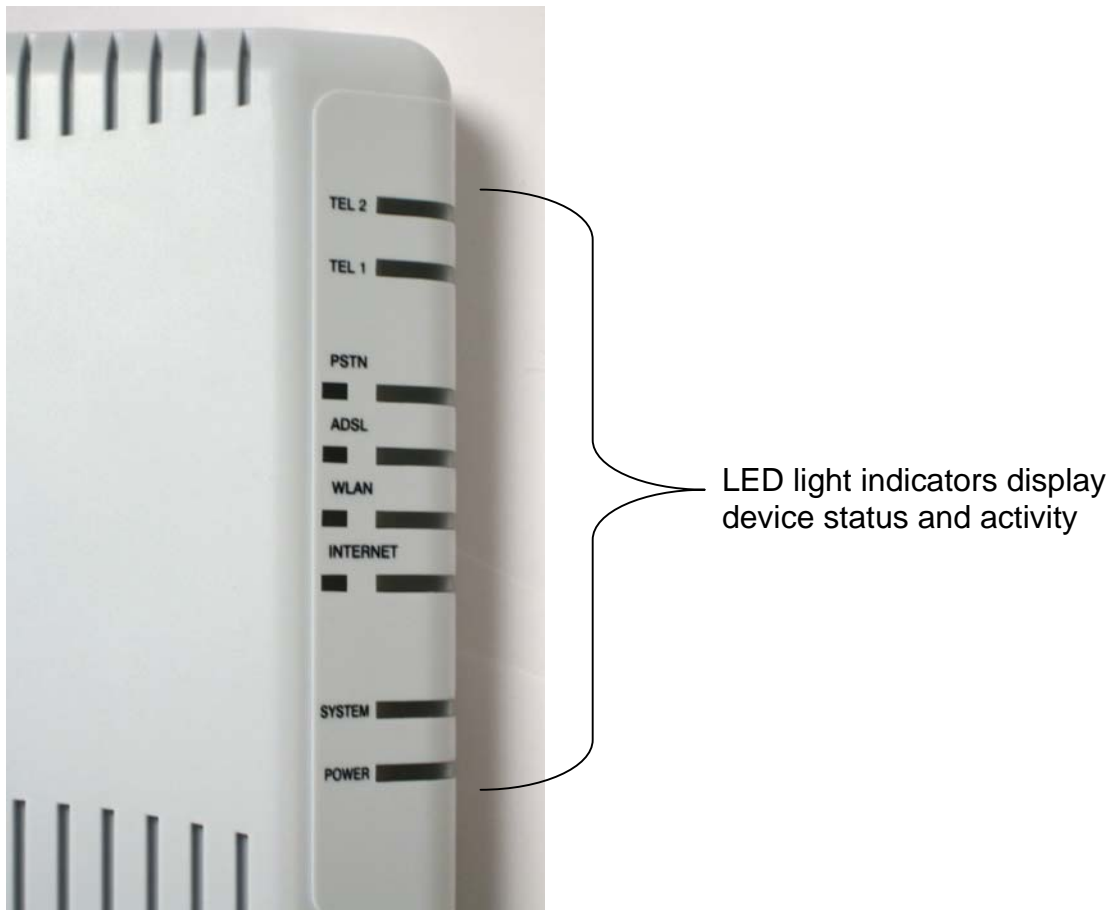


Figure B-2: Front Panel

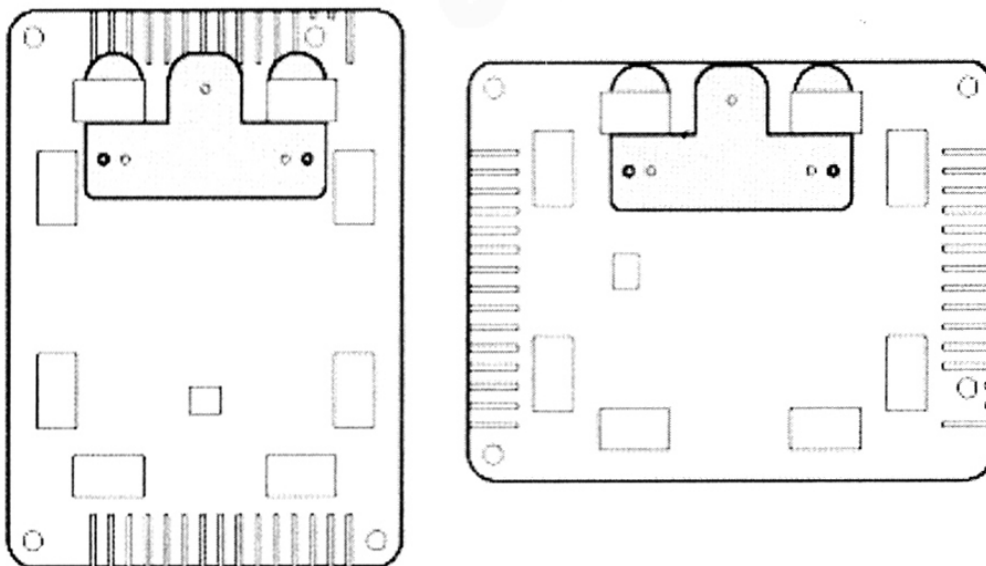
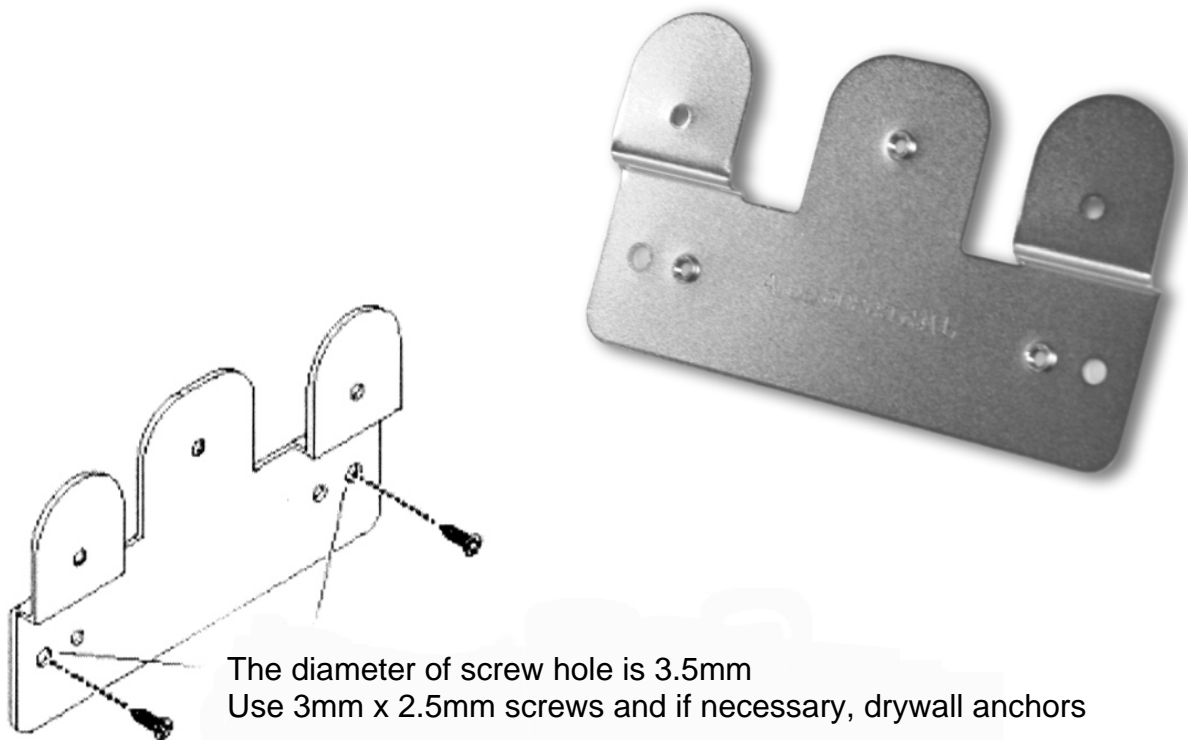


LED Description

LED	STATE	FUNCTION
FRONT PANEL		
Power	Green light on	The device is receiving power; voltage is within the acceptable range
System	Red light on temporarily after power on	Boot phase
	Red light continuous	An abnormal operation condition
	Red light flashing	Software upgrade in progress
	Red light off	The system in working normally
Internet	Green light on	Link to the Internet established
	Red light off	No link established
WLAN	Green light on	Link up
	Green light flashing	Transmission and reception data
ADSL	Green light on	Link to telephone line established
	Green light off or flashing slowly	Link down
	Green light flashing fast	Link training (connection process)
PSTN (Not used in the basic configuration)	Green light on	FXO mode enabled (requires software configuration) and link in use
	Green light off	FXO mode disabled, lifeline mode active or VOIP configured
TEL 1	Green Light on	Device connected to this port
	Green light flashing	Device is in use
TEL 2 (Used only when second line is installed)	Green Light on	Device connected to this port
	Green light flashing	Device is in use
REAR PANEL		
NETWORK PORTS - LANx (Not used in the basic configuration)	Left Green light on	Link established
	Left Green light off	Link down
	Left Green light flashing	Link activity
	Right Green light on	100Mbps link
	Right Green light off	10Mbps link

APPENDIX C: Unit Wall Installation

The PrimeWiFi Wireless router can be mounted on a wall. Included in the package you will find the metal wall mount bracket. Screw the bracket on a solid surface and place the Wireless router on the metal bracket securely.



APPENDIX D: Technical Specifications

INTERFACE	
ADSL port	1 ADSL (6 pin RJ11 connector for Annex A, 8 pin RJ45 connector for Annex B)
LAN port	4 10/100BASE-TX (8 pin RJ45 connector)
TEL port	2 FXS (6 pin RJ11 connector)
PSTN port	1 FXO (6 pin RJ11 connector)
WiFi	802.11b/g
POWER	
Input Voltage	12V DC
DC input current	1.5A (DC 12V)
Average power	12.6W
ENVIRONMENT CONDITION	
Storage Condition	-20°C to 40°C
Humidity	Less than 95% (non condensing)
Operating Temperature	0°C to 40°C
Humidity	Less than 80% (non condensing)
SIZE (with no projection)	
200(W) x 150(D) x 48(H) mm	
WEIGHT	
440g	
MAC ADDRESS TABLE SIZE	
1,000 (Max.)	
MEMORY CAPACITY	
RAM Memory	32 MB
Flash Memory	8 MB
PRODUCT CERTIFICATION	
CE	
COMPLIANCES	
IEC60950, EN 60950	
EN55022, EN61000-3-2, EN61000-3-3, EN55024	

APPENDIX E: Important Safety Precautions

When using your Wireless router, basic safety precautions should always be followed to reduce the risk of fire, electric shock, and injury, including the following:

1. Read and understand all instructions.
2. Follow all warnings and instructions marked on the device.
3. Unplug this device from the wall outlet before cleaning. Do not use liquid or aerosol cleaners. Use a damp cloth for cleaning.
4. Do not use this product near water (for example, near a bathtub, kitchen sink).
5. Do not place this product on an unstable surface, such as a table, shelf or stand. The product may fall, causing serious damage.
6. Slots and openings in the back or bottom of the device are provided for ventilation. To protect them from overheating, these openings must not be blocked by placing the product on a soft surface such as a bed, sofa, rug or carpet. This product should never be placed near or over a radiator or heat register. This product should not be placed in any area where proper ventilation is not provided.
7. This product should be operated only from the type of power source indicated on the marking label.
8. Do not allow anything to rest on the power cord. Do not install this product where the cord may have anyone walking on it.
9. Never push objects of any kind into this product through slots as they may short out parts that could result in a risk of fire or electric shock.
10. Never spill liquid of any kind on the product.
11. To reduce the risk of electric shock, do not disassemble this product, but take it to an authorized service facility. Incorrect reassembling can cause electric shock when the product is subsequently used.
12. Do not overload wall outlets and extension cords as this can result in the risk of fire or electric shock.
13. Unplug this product from the wall outlet and refer servicing to an authorized service facility under the following conditions:
 - i. When the power supply cord or plug is damaged or frayed.
 - ii. If liquid has been spilled onto the product.
 - iii. If the product has been exposed to rain or water.
 - iv. If the product does not operate normally by following the operating instructions. Adjust only those controls that are covered by the operating instructions, as improper adjustment of other controls may result in damage and often requires extensive work by an authorized technician to restore the product to normal operation.
 - v. If the product has been dropped and has been damaged.
 - vi. If the product exhibits a distinct change in performance.
14. Do not use the telephone to report a gas leak in the vicinity of the leak.
15. This product contains parts that are sensitive to static shock. Please avoid touching interface connectors with bare hands.

IMPORTANT NOTICE

Do not use or store the device:

1. In direct sunlight
2. In a hot environment
3. Where there could be a sudden temperature change
4. In a damp place or near a liquid such as water. Humidity must be less than 80%.
5. In areas subject to a lot of vibration.
6. In dusty and / or carpeted areas (directly placed on carpet).
7. In the presence of corrosive gases.

APPENDIX F: Contact Information

For Technical Support contact PrimeTel at:



(+357) 22 10 22 10 (From Abroad)

Fax Number: (+357) 22 10 22 11

E-mail: info@primehome.com

Or visit one of your Customer Support Centres:

NICOSIA

89 Limassol Avenue

2121 Aglantzia

Nicosia

LIMASSOL

Akadimias Shopping Centre B4

9 Spirou Kyprianou str. (Formerly Akadimias)

4043 Potamos Germasogeias

Limassol

The Maritime Centre

141 Omonia Avenue

3045 Limassol

PRIME *WiFi*



Customer Support Service

 **133**

(+357) 22 10 22 10 (From Abroad)

Fax Number: (+357) 22 10 22 11

E-mail: info@primehome.com